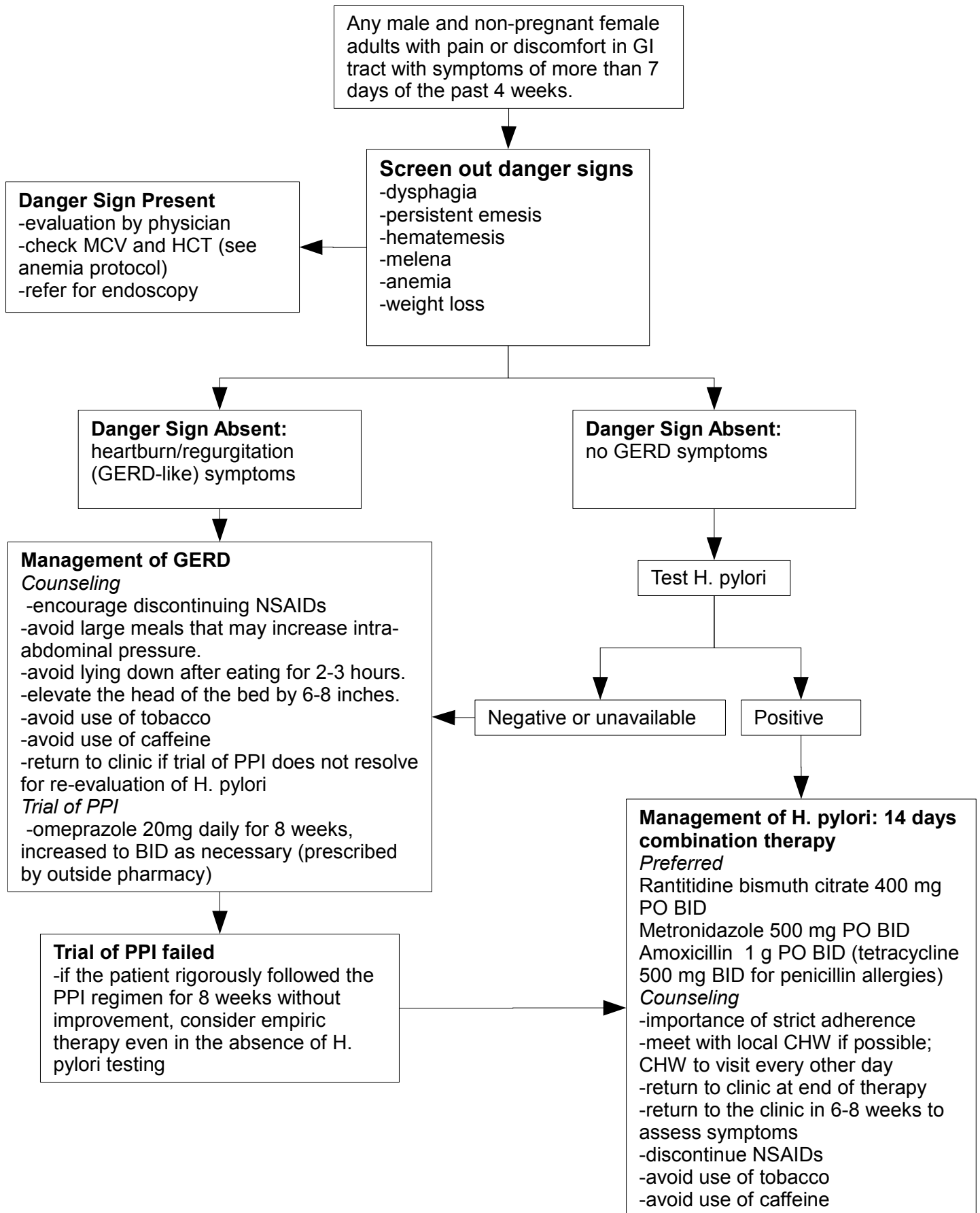


Protocol for Patients Presenting with GERD and Dyspepsia Symptoms



Notes (typically do not need to be printed out at the clinic; just for reference and documentation)
We are just now incorporating helicobacter pylori testing into this protocol. We anticipate modifying this protocol once we have some better data on the local epidemiology.

Ideally, we would utilize a test of cure, such as stool antigen, to assess the efficacy of the program. We have yet to receive such a test. In its absence, the main outcomes are adherence to therapy and symptoms resolution at the end of 6-8 weeks following treatment.